



ConQuest Case® RACKMOUNT CASES – STANDARD OPTIONS

Delta Lift / Tie-Down Rings

Four (4), delta lift / tie downs installed on case main body with backing plates



Lid Handles

Two (2), strap handles installed on each lid.



Padlock Hasps

Two (2), rigid padlock hasp assemblies installed on each lid.

Coupling Catches

Footman loops are installed on upper and lower regions of case base side walls. Two (2), removable coupling catches are provided with dedicated storage in lid.



Permanent Casters

Four (4), 4 in. swivel casters (/w dual locking mechanism) are permanently installed. The stackable skid pad system is not present.

Removable Casters /w Store-In-Lid Kit

Four high strength aluminum caster clip plates are installed on bottom of case main body. The bottom HDPE skid plate system is upgraded from 0.5 in. to 1.0 in. thick. Four removable 4 in. casters (/w dual locking mechanism) are supplied with a caster store-in-lid kit.



Storage Pouch

Storage pouches can be installed in one or both lids for storage of peripherals and auxiliary equipment such as manuals, mice, keyboards, cables, etc...





Conquest Case® RACKMOUNT CASES – STANDARD OPTIONS

Top / Bottom Rails

Support rails (front to back) are installed along the top and bottom of the rack frame. Ideal for supporting a heavy component which occupies the full rack.



Adjustable Horizontal Rails

Horizontal equipment support rails are independently installed (on the inner rack frame) to provide full front to back equipment support. Ideal for installing equipment which cannot be fixed to the rear rack frame.



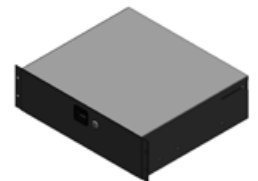
Adjustable Vertical Rails

Adjustable intermediate vertical rails provide a secondary rail set. Ideal for securing equipment which are shallower than the rack frame depth.



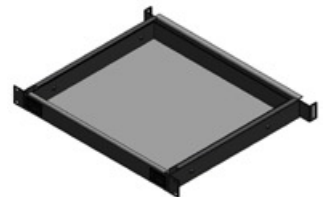
Lockable Rack Drawers

16 gauge chassis with 14 gauge front panel. Fully Enclosed top prevents contents from spilling out and debris from getting in. Flush mount spring loaded latch prevents unnecessary opening of the drawer. Lock and keys included. Drawer extends to a full 14 in. (356mm) for easy access. High quality ball bearing slides with release mechanism. Durable black textured finish resists marks and scratches. Available in 2U, 3U and 4U configurations.



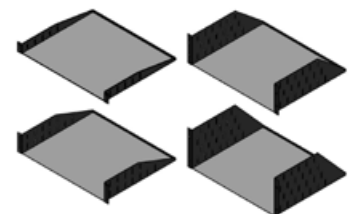
1U Sliding Drawer / Tray

Made from heavy duty 16 gauge steel. High quality ball bearing slides with release mechanism. Sliding rear brackets provide full support even when the shelf is fully extended. Two latches prevent unnecessary extension of drawer. Drawer extends a full 14 in. (356mm). Durable black textured finish resists marks and scratches.



Fixed Utility Shelves

14.97" deep. Provides a quick and easy method for rack mounting equipment that cannot normally be mounted in a rack. Made from heavy duty 16 gauge steel. One piece construction for maximum strength. Durable black textured finish resists marks and scratches. Available in 1U, 2U, 3U and 4U configurations.





Engineered For Any Destination™



ConQuest Case® RACKMOUNT CASES – STANDARD OPTIONS

Custom Built Sliding Trays

Custom designed and built specifically to meet your systems integration requirements.



Blind Bezel Panels

Blank bezel panels for filling empty spaces in the rack. Pre-punched with four slots for mounting to STD 19 in. racks. Durable black textured finish resists marks and scratches. Made from heavy duty 16 ga. steel with 0.43 in. (11mm) flanges on top and bottom for extra strength. Available in 1U, 2U, 3U and 4U configurations.



Vented Bezel Panels

Pre-punched with horizontal slots to allow air to circulate. For rack enclosures where heat build up is a concern. Made from heavy duty steel (1.5mm/16ga). Standard 19 in. rack width with 0.43 in. (11mm) flanges on top and bottom for extra strength. Durable black textured finish resists marks and scratches. Available in 1U and 2U configurations.



Custom Bezel Panels

Custom designed and built specifically to meet your systems integration requirements.

