



PETS CONTAINER SYSTEM

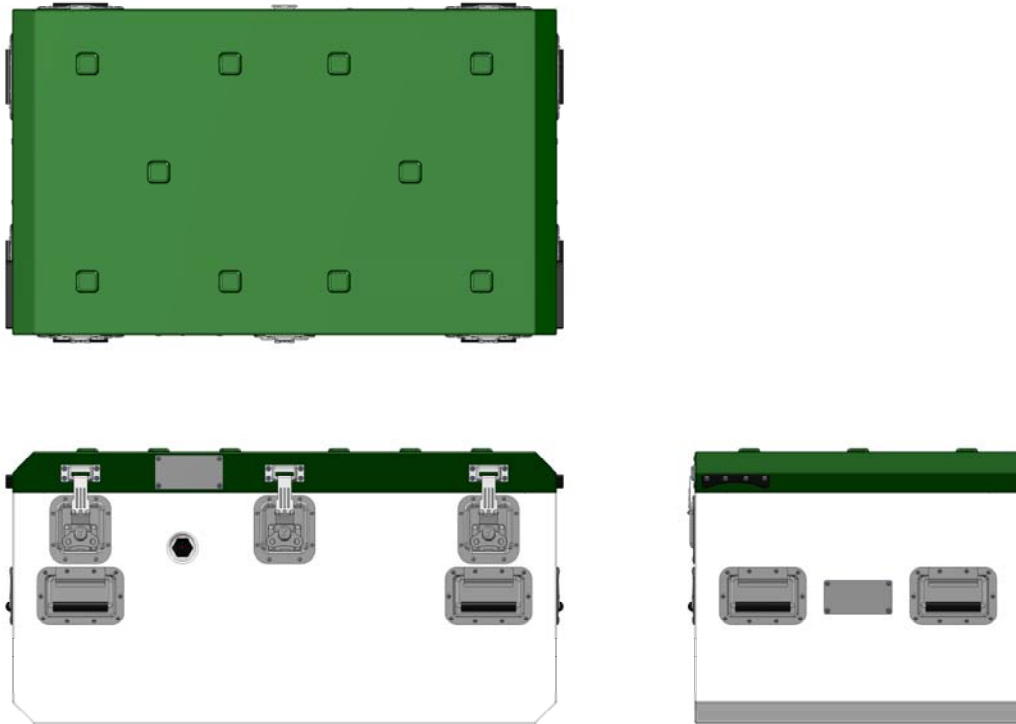


Impact's PETS Container System is an all climate, heavy payload ready shipping and storage container system. The PETS Container System was developed jointly with Canada Task Force 3 - the Heavy Urban Search and Rescue (HUSAR) team located in Toronto (Canada) to address their heavy equipment deployment requirement.

Advantages:	High Strength:	Won't deform under ultra heavy superimposed (stacked) loads
	All Climate Integrity:	Will not become brittle or fracture (crack) at low temperatures Will not sag, creep or warp at elevated temperatures
	Pallet Cube Optimization	Various container combinations yield the same cube volume - facilitates rapid deployment via land, sea or air.



PETS CONTAINER SYSTEM

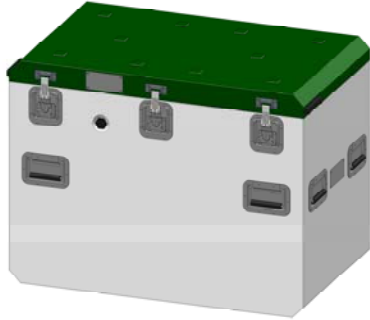


PETS Container - General Specifications

- Shell:** 0.090 in. aluminum (5052-H32)
- Construction:** Welded (waterproof)
- Valance:** Proprietary square tubular valance & investment cast corner lug system /w dual gaskets (patent pending)
- Finish:**
 Base: Plain Aluminum
 Lid: Powder Coat Finish
 (STD Colours Include: Black, Blue, Green, Red, Orange, Yellow, White)
- Hardware:**
 Recessed valance spanning latches (gasketed)
 Recessed handles (gasketed)
 Hinges /w integral lid stays
 HDPE lift handles (located on lid)
 Automatic pressure equalization valve
- Features:**
 Low profile emboss pattern Reason: Easy alignment & manipulation of heavy payload containers
 Chamfered Edges Reason: Prevents puncturing of aircraft fuselage
 Location for container content markings
- Interiors:** Empty; Foam lined; Foam lining + blocks; Custom CNC machined foam insert; Flange + panel;
 Deck systems & internal chassis (custom engineered)

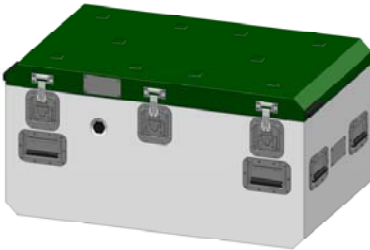


PETS CONTAINER SYSTEM



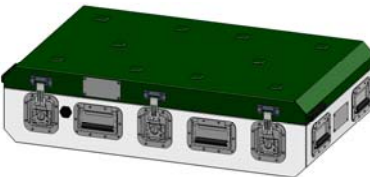
PETS F/1.5H Container

Shell Dimensions: 40.0 in. L X 24 in. W X 30 in. OAH (27 in. Base + 3 in. Lid) - OUTSIDE
Construction: Welded (waterproof)
Finish: Base: Plain Aluminum
Lid: Powder Coat Finish



PETS F/F Container

Shell Dimensions: 40.0 in. L X 24 in. W X 20 in. OAH (17 in. Base + 3 in. Lid) - OUTSIDE
Construction: Welded (waterproof)
Finish: Base: Plain Aluminum
Lid: Powder Coat Finish



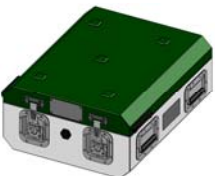
PETS F/H Container

Shell Dimensions: 40.0 in. L X 24 in. W X 10 in. OAH (7 in. Base + 3 in. Lid) - OUTSIDE
Construction: Welded (waterproof)
Finish: Base: Plain Aluminum
Lid: Powder Coat Finish



PETS H/F Container

Shell Dimensions: 19.5 in. L X 24 in. W X 20 in. OAH (17 in. Base + 3 in. Lid) - OUTSIDE
Construction: Welded (waterproof)
Finish: Base: Plain Aluminum
Lid: Powder Coat Finish



PETS H/H Container

Shell Dimensions: 19.5 in. L X 24 in. W X 10 in. OAH (7 in. Base + 3 in. Lid) - OUTSIDE
Construction: Welded (waterproof)
Finish: Base: Plain Aluminum
Lid: Powder Coat Finish



PETS CONTAINER SYSTEM



PETS Rackmount Container

- Shell:** 0.090 in. aluminum (5052-H32)
- Construction:** Welded (waterproof)
- Valance:** Proprietary square tubular valance & investment cast corner lug system /w dual gaskets (patent pending)
- Finish:** Base: Plain Aluminum
Lids: Powder Coat Finish
(STD Colours Include: Black, Blue, Green, Red, Orange, Yellow, White)
- Footprint:** Full Length / 1.5 High
- Dimensions:** 1016.0 mm (40.0 in.) L X 609.6 mm (24.0 in.) W X 1016.0 mm (40.0 in.) OAH - OUTSIDE
- Interior:** Shock-mounted STD 19 in. aluminum rack frame
Rack Height: 19U (33.25 in.)
Rack Depth: 24.0 in.
Hole Pattern: E.I.A. STD Round Hole
- Payload Ranges:** 20 - 49 lbs
50 - 99 lbs.
100 - 170 lbs.
171 - 250 lbs
251 - 350 lbs